

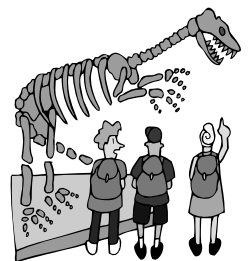
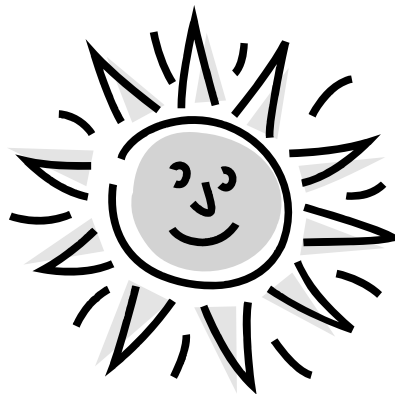


# Balboa Day Camps

**June 25 - August 24**

AGES 5-13 YEARS

Summer 2012



**PLEASE CALL OR STOP BY THE OFFICE FOR MORE INFORMATION**  
Phone: (818) 756-9642 • Fax: (818) 756-9649  
17015 Burbank Boulevard. Encino CA, 91316



# BALBOA CAMPS



## REGISTRATION INFORMATION

### Registration

1. Campers must be age appropriate by June 25, 2012.
2. Registration may only be walked in during regular office hours and is on a first come, first serve basis until camp fills.
3. You are considered registered for a week of camp when payment is received, by the park, for that specific week.
4. All payments must be made with exact cash, check, and/or money orders made payable to: City of Los Angeles
5. The "One-Time Registration Fee is per camp season and is NON-REFUNDABLE." This fee covers one Camp T-Shirt per camper, brochures, flyers, and miscellaneous administrative expenses.
6. Campers that require a One-on-One Aide must complete the "SUPPLEMENTAL SUPERVISION" forms (at the park office) and pay \$50 for each week that the aide is required to cover camp for related expenses.
7. All trips and activities are subject to change without prior notice.
8. A \$15 fee per child per change per week will be charged for switching weekly registration.

### Deposit & Payment Plan

The Deposit and Payment Plan allows individuals to pay a \$25 NON-REFUNDABLE deposit to reserve a camper's space for a particular week. The first week chosen must be paid in FULL then a \$25 deposit may be placed on each remaining week chosen. The balance of each week will be due on the Thursday BEFORE the week that has been reserved. Failure to pay on time will forfeit the \$25 deposit and the camper's space in camp.

### Refunds and Cancellations

Due to prior scheduling of staff, transportation, trip reservations, pre-purchase of tickets, the inability to replace your child's space on the days that they are absent, etc. There are **no partial week refunds**.

Only full week cancellation requests will be processed if a "Refund Request Form", is completed and received by the Friday **BEFORE** the week in question. These forms can be found at the park office.

**A City Wide 15% refund assessment and \$10 processing fee PER WEEK, PER CHILD will apply for any request meeting the prerequisites.** Refunds take 8-12 weeks.

#### **CAMP BALBOA TUITION**

**Ages 5-10**

#### **WEEKLY RATES**

- \$20.00 One time registration fee (per child)  
Includes one Camp T-shirt
- 160.00 5 days - WEEK, Includes trip days
- \$125.00 4 days - non-trip days
- \$100.00 3 days - non-trip days
- \$15.00 Additional Camp T-shirts

Extended care included!

#### **TRAVEL CAMP TUITION**

**Ages 11-13**

#### **WEEKLY RATES**

- \$20.00 One time registration fee (per child)  
Includes one Camp T-shirt
- \$200.00 5 days - WEEK, Includes trip days
- \$100.00 3 days - non-trip days
- \$15.00 Additional Camp T-shirts

Extended care included!



As covered entity under Title II of the Americans with Disabilities Act, the City of L.A. does not discriminate on the basis of disability, and upon request will provide reasonable accommodations to ensure equal access to its programs, services and activities.



# **BALBOA AND TRAVEL CAMP SCHEDULES**

## **CAMP BALBOA AGES 5-10**

<u>WEEK</u>	<u>DATES</u>	<u>TRIP</u>
1	6/25-6/29	KNOTT'S BERRY FARM
2	7/2-7/6	DISNEYLAND**
3	7/9-7/13	CAMELOT
4	7/16-7/20	MEDIEVAL TIMES
5	7/23-7/27	RAGING WATERS
6	7/30-8/3	MAGIC MOUNTAIN
7	8/6-8/10	DAVE AND BUSTERS
8	8/13-8/17	HURRICANE HARBOR
9	8/20-8/24	MOUNTASIA

**FIELD TRIPS ARE WEDNESDAYS DAYS UNLESS OTHERWISE NOTED**

**Please Note: \*\* Field Trips Are Subject to Change With Out Notice\*\***

**Children Must Wear Camp T-Shirts, Closed toe Tennis Shoes**

## **TRAVEL CAMP AGES 11-13**

<u>WEEK</u>	<u>DATES</u>	<u>TRIP</u>	<u>TRIP</u>
1	6/25-6/29	ULTRA ZONE & BOWLING	KNOTT'S BERRY FARM
2	7/2-7/6	MOVIE & CASTLE PARK	DISNEYLAND
3	7/9-7/13	PACIFIC PARK	CAMELOT
4	7/16-7/20	SCOOTERS JUNGLE	MEDIEVAL TIMES
5	7/23-7/27	MOUNTASIA	RAGING WATERS
6	7/30-8/3	MOVIE & BOWLING	MAGIC MOUNTAIN
7	8/6-8/10	CASTLE PARK & HANSEN DAM	DAVE AND BUSTERS
8	8/13-8/17	CAMELOT	HURRICANE HARBOR
9	8/20-8/24	SKATELAND	MOUNTASIA

**FIELD TRIPS ARE MONDAYS AND WEDNESDAYS UNLESS OTHERWISE NOTED**

**Please Note: \*\* Field Trips Are Subject to Change With Out Notice\*\***

# BALBOA AND TRAVEL CAMP

## Camp Balboa ages 5-10

Camp Balboa provides opportunities for personal growth and group camaraderie in a safe, fun and supportive atmosphere. Children are involved in games, sports and crafts planned specifically for their age range. Campers may be divided into age groups depending on the activity. Field trips are planned each week to fun filled places such as Disneyland, Knott's Berry Farm, Raging Waters just to mention a few.

At Camp Balboa, campers will experience new things, develop new skills and have fun along the way. An environment is created where campers are active, learning, laughing and are made to feel special. Our goal is a Happy Camper.

## Travel Camp ages 11-13

Balboa Travel Camp provides exciting activities that will challenge the energies of this age group. This camp is a great way for teens to meet new friends in a fun filled environment. In addition to experiencing fun-filled days of sports, games and crafts, our teens will enjoy two field trips a week to places such as Disneyland, Hurricane Harbor, Mountasia, the movies, bowling, and much more.

### **CAMP DATES**

June 28 - September 3, 2010

### **DAYS**

Monday - Friday

### **HOURS**

7:30 a.m. - 6:00 p.m.



## **DEPARTMENT OF RECREATION AND PARKS COMMUNITY..... THROUGH PEOPLE, PARKS, & PROGRAMS**



*PLEASE CALL OR STOP BY THE OFFICE FOR*

### *CITY OF LOS ANGELES*

Mayor - Antonio R. Villaraigosa  
12th District Council Member - Greg Smith

### *DEPARTMENT OF RECREATION AND PARKS BOARD OF COMMISSIONERS*

President - Barry A. Sanders  
Vice President - Lynn Alvarez  
Johnathan Williams, W. Jerome Stanley, Jill T. Werner

Jon Kirk Mukri, General Manager  
Regina Adams Executive Officer  
Kevin Regan Assistant General Manager - Operations Branch  
Vicki Israel Assistant General Manager - Partnership Branch  
Mike Shull Assistant General Manager - Planning Construction & Maintenance  
Ramon Barajas Superintendent, Maintenance Operations  
Charles Singer Superintendent  
Anita Meacham Principal Recreation Supervisor II  
Steve Cline District Supervisor

### *BALBOA SPORTS CENTER STAFF*

Larry Mellon Senior Recreation Director I  
Carlos Alvarado Recreation Coordinator

### *RECREATION ASSISTANTS*

Dan Davis, Tami Strachan, Jake Tarquinio,  
Toby Spino, Cristian Reyes,  
Matthew Nagatani Michael Lee,  
Devin McElvogue, Steve Pecoff,  
Leonard Samuels, Nayley Jimenez

### *MAINTENANCE STAFF*

*SPA II's*  
Pam Swanson